

MUSIC — Year 2 Spring

Exploring sounds and identifying instruments

Key vocabulary to remember and use in your learning

Word	Definition
brass	Part of the orchestra made up of brass instruments, such as trumpets, trombones, tubas and French horns.
notation	A way of showing what music looks like when it's written down. It can then be played with instruments or sung through the use of written or printed signs and symbols.
percussion	The percussion section is one of the main parts of the orchestra and the concert band. It includes most instruments played with a beater and all unpitched (untuned) instruments. The percussion section is split into three separate groups.
strings	The string section is made up of instruments played with a bow belonging to the violin family. It's normally made up of first and second violins, violas, cellos, and double
woodwind	The modern orchestra's woodwind section includes: flutes, oboes, clarinets, and bassoons.

Orchestra

An orchestra is a large group of musicians and their instruments which mainly plays classical music. It mixes together instruments from different families, including bowed string instruments, brass instruments and percussion instruments. Other instruments such as the piano and celesta may sometimes appear in a fifth section.

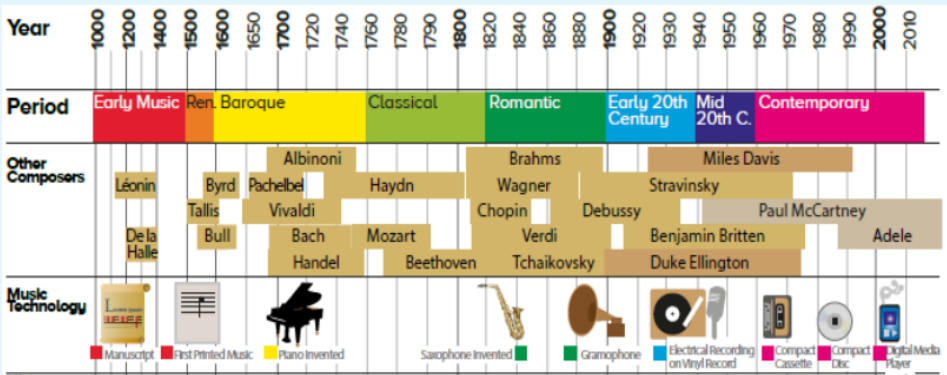
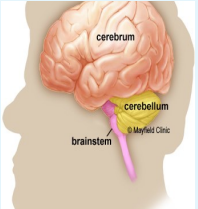


Key knowledge to know and use

- High, medium and low-pitched sounds, combined with other musical elements, are vital components of composition.
- A final performance, following a period of rehearsal, displays the results of adjustments and refinements made to a piece of music.
- To begin to explore, choose and order sounds using the inter-related dimensions of music.
- Different sections of an orchestra have different names eg. Brass, strings, woodwind, percussion

How our brain makes sense of music

Our brains need a number of sound signals to make sense of the music in our ears. These signals can be easy to understand, like loudness, or quite tricky, such as deciding which instrument you're listening to. Our brain uses something called 'timbre' to help us decide which instrument we can hear.



Sheet music

Sheet music is a handwritten or printed form of musical writing that uses musical symbols to show the pitches, rhythms, and notes of a song or instrumental musical piece.